

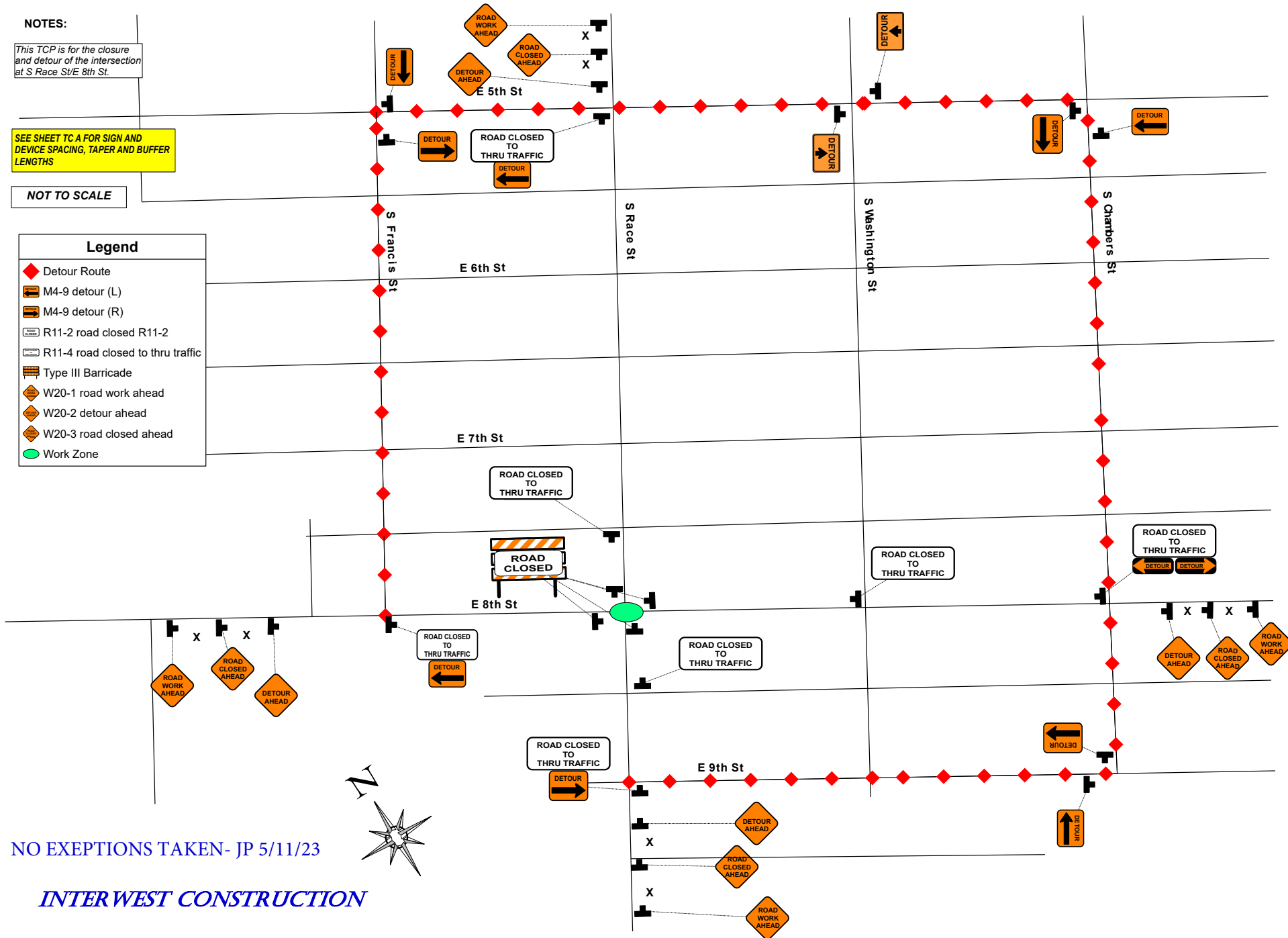
NOTES:

This TCP is for the closure and detour of the intersection at S Race St/E 8th St.

SEE SHEET TC A FOR SIGN AND DEVICE SPACING, TAPER AND BUFFER LENGTHS

NOT TO SCALE

Legend	
	Detour Route
	M4-9 detour (L)
	M4-9 detour (R)
	R11-2 road closed R11-2
	R11-4 road closed to thru traffic
	Type III Barricade
	W20-1 road work ahead
	W20-2 detour ahead
	W20-3 road closed ahead
	Work Zone



NO EXEPTIONS TAKEN- JP 5/11/23

INTERWEST CONSTRUCTION