

# MAKING A RESIDENTIAL FLOOR PLAN

Department of Community & Economic Development

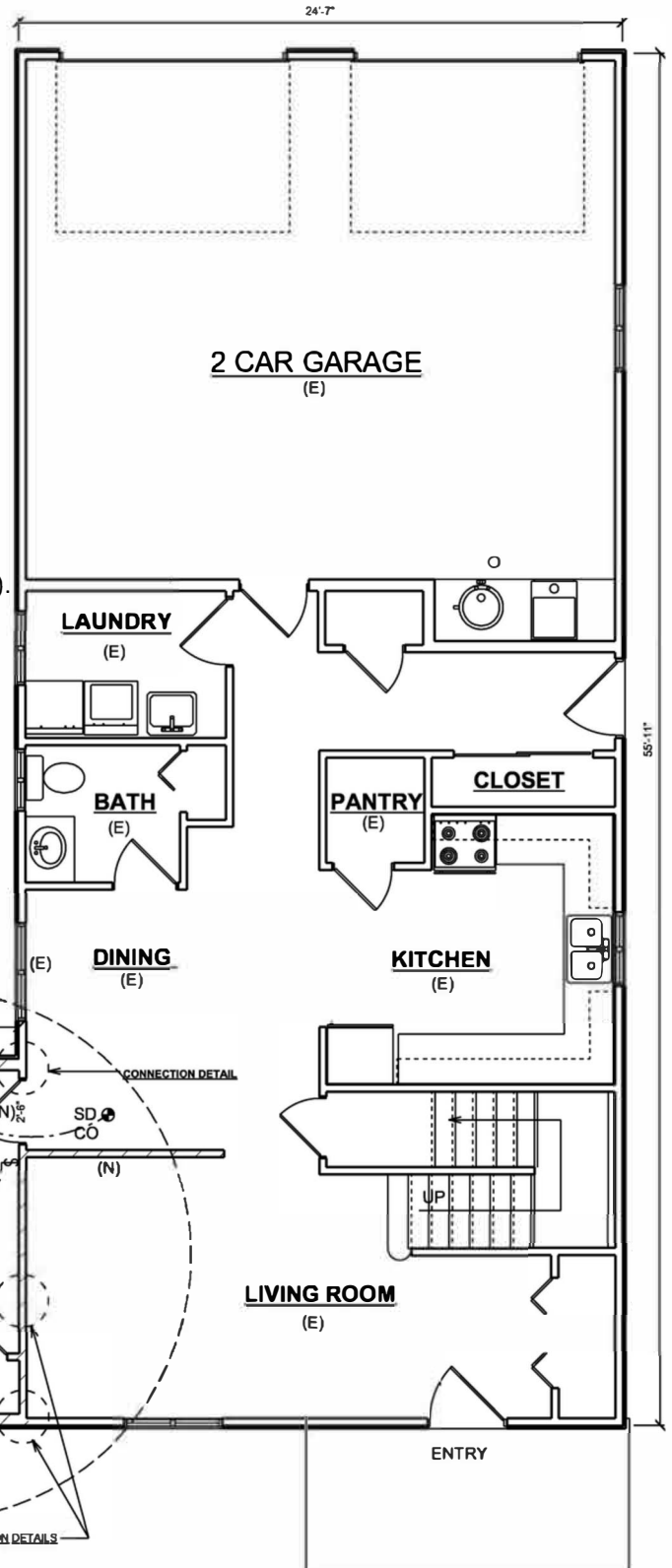
321 E 5th Street, Port Angeles, WA 98362

360.417.4750 | www.cityofpa.us | ced@cityofpa.us



## Floor Plan Checklist

- Scale and Measurements:
  - Floor plan drawn to an accepted scale (e.g., 1/4" = 1').
  - Include a scale bar or notation on the plan.
  - Show accurate dimensions for all rooms and spaces.
- North Arrow:
  - Include a north arrow for orientation.
- Room Labels:
  - Clearly label each room (e.g., kitchen, bathroom, bedroom).
- Door and Window Locations:
  - Indicate all door and window locations
  - Include dimensions and swing direction.
- Fixtures and Appliances:
  - Show locations of key fixtures (toilets, bathtubs, showers).
  - Include placement of major appliances (stoves, water heaters).
- Wall Details:
  - Distinguish between existing and proposed walls.
- Plumbing Layout:
  - Include locations of water supply lines, drains, and vents.
- Electrical Layout:
  - Indicate any panel locations.
  - Show the location of Smoke detectors and CO detectors.
- Annotations and Legends:
  - Provide a legend for symbols used in the plan.
  - Include general notes or key instructions.



**LEGEND:**  
 NEW (N)   
 EXISTING (E)

SCOPE OF WORK



**MAIN FLOOR PLAN**

EXISTING 680 SQ. FT.  
 NEW BEDROOM 159 SQ. FT.  
 (SCALE 1/4" = 1')

PROVIDE THIS INFORMATION

PROVIDE METHOD OF CONNECTION DETAILS

\*\*\*\* PROVIDE SUFFICIENT DETAILS AND SPECIFICATIONS THAT ARE SPECIFIC TO THE NEW CONSTRUCTION, AND BUILDING INFORMATION, SOME OF WHICH MAY NOT BE INDICATED IN THIS HANDOUT.

THIS IS AN EXAMPLE FLOOR PLAN ONLY  
 DO NOT USE THIS FOR YOUR DESIGN  
 SCALE INDICATED IS FOR SHOW ONLY