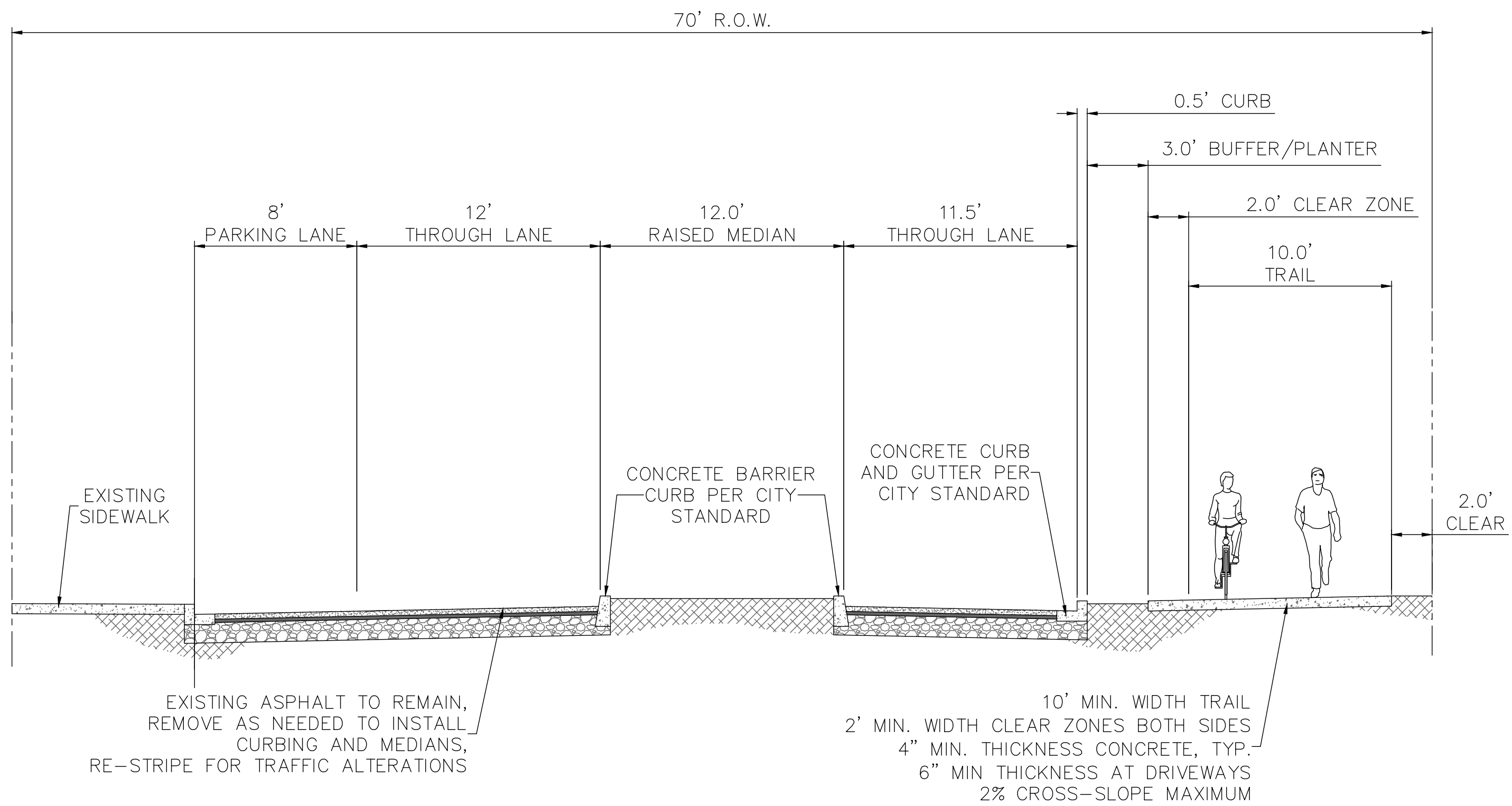
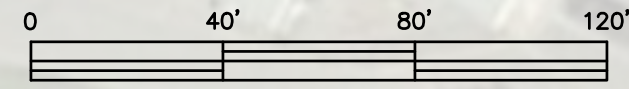
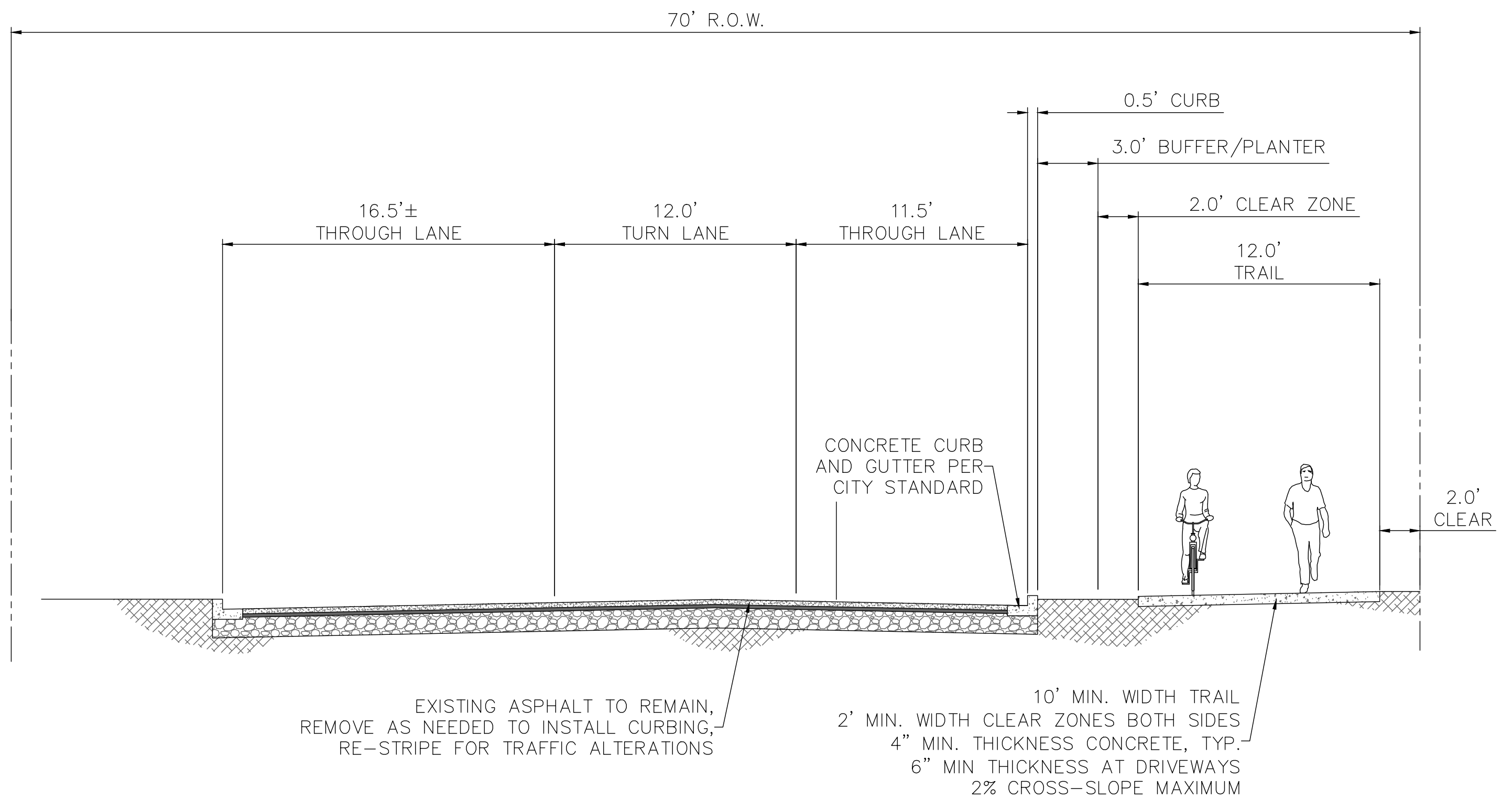


SITE PLAN

Scale: 1" = 40'



B
1 SECTION B - MARINE DRIVE
Scale: NTS



A
1 SECTION A - MARINE DRIVE
Scale: NTS

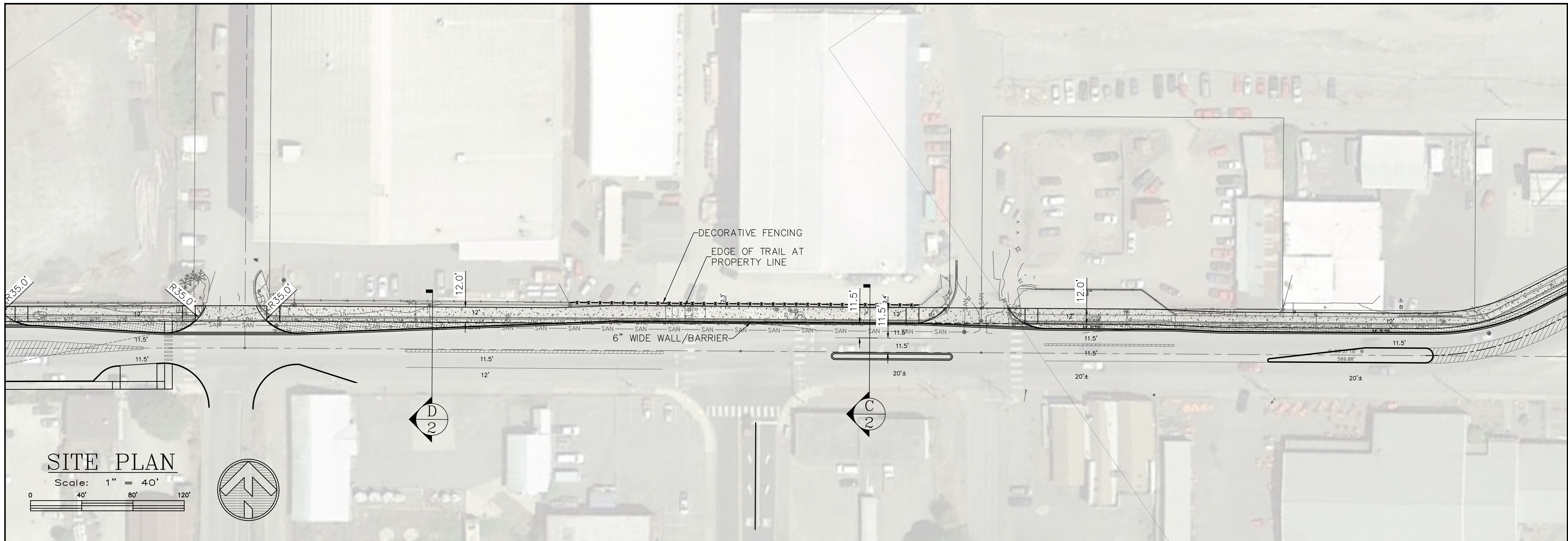
Z ENOVIC & ASSOCIATES
INCORPORATED
301 E. 6TH STREET, SUITE 1
PORT ANGELES, WA 98102
PHONE: (360) 417-0501
FAX: (360) 417-0514
EMAIL: ZENOVIC@ZENOVIC.NET

REVISIONS:	DATE	MARK	NOTE

SEGMENT 1A - PRELIMINARY LAYOUT
CITY OF PORT ANGELES
321 E. 5TH STREET
PORT ANGELES, WA

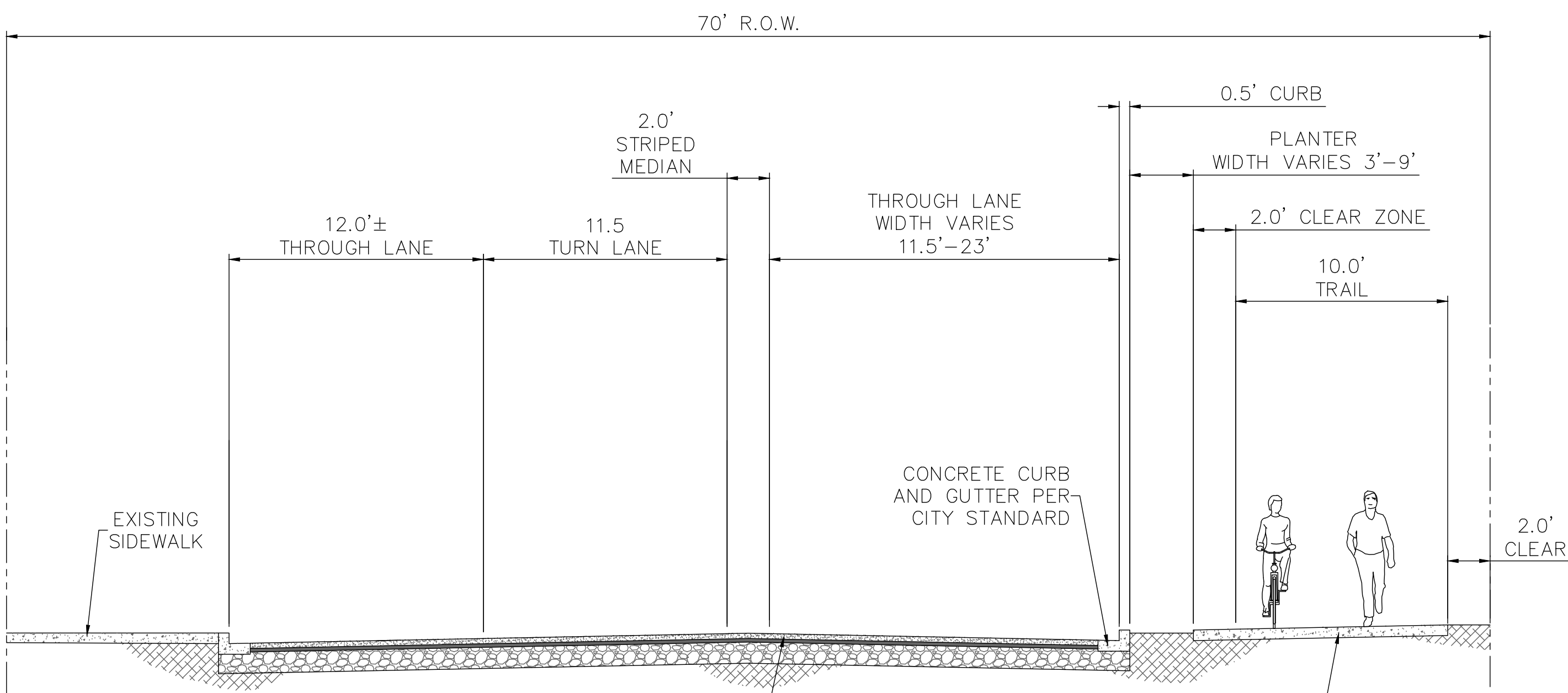
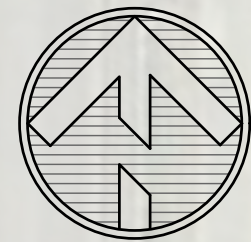
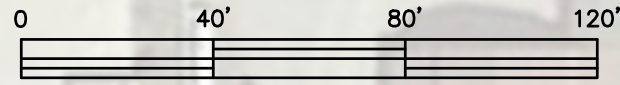
TITLE: COPA WATERFRONT TRAIL EXTENSION
SCALE: 1" = 40'
FILE: 16452A-E2
JOB NO: 16452
DATE: September 18, 2017
SET: PRELIM

SHEET



SITE PLAN

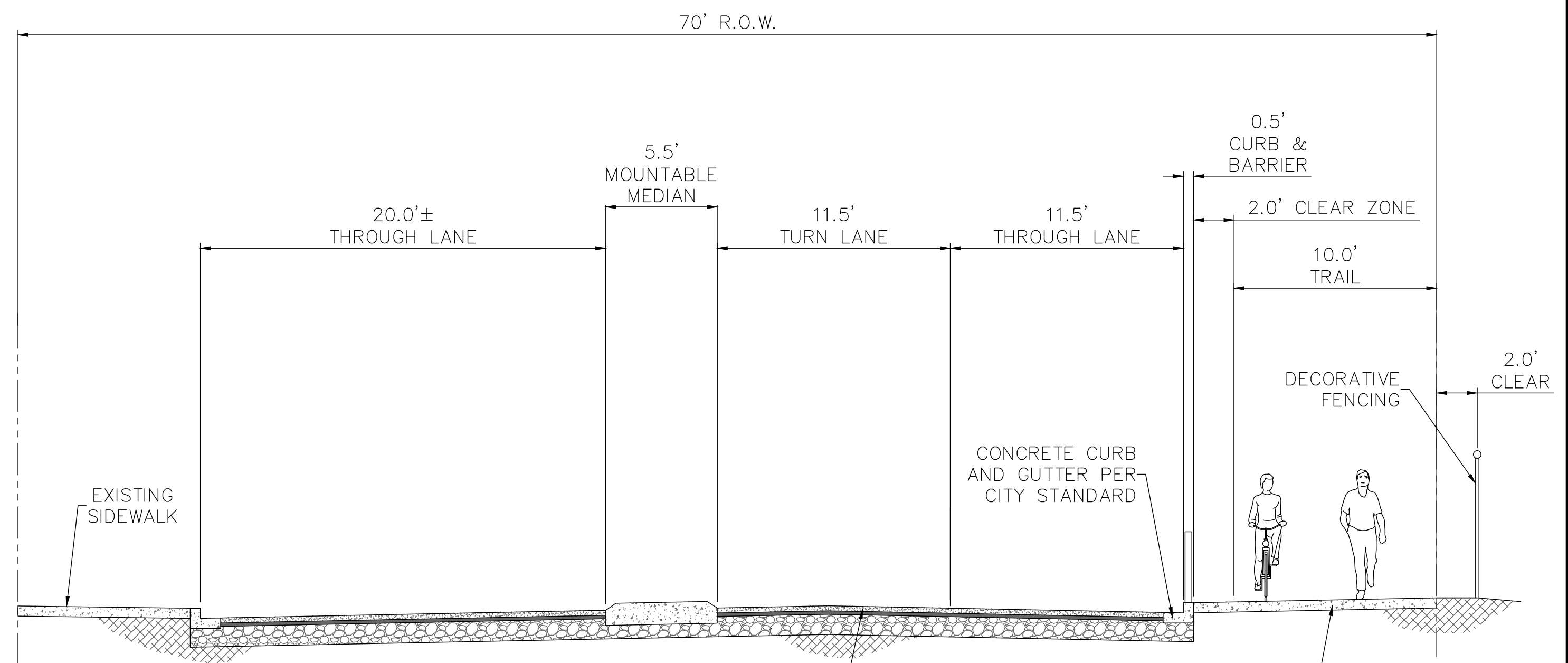
Scale: 1" = 40'



EXISTING ASPHALT TO REMAIN, REMOVE AS NEEDED TO INSTALL CURBING, RE-STRIPE FOR TRAFFIC ALTERATIONS

10' MIN. WIDTH TRAIL
2' MIN. WIDTH CLEAR ZONES BOTH SIDES
4" MIN. THICKNESS CONCRETE, TYP.
6" MIN THICKNESS AT DRIVEWAYS
2% CROSS-SLOPE MAXIMUM

D
SECTION D - MARINE DRIVE
Scale: NTS



EXISTING ASPHALT TO REMAIN, REMOVE AS NEEDED TO INSTALL CURBING AND MEDIANS, RE-STRIPE FOR TRAFFIC ALTERATIONS

10' MIN. WIDTH TRAIL
2' MIN. WIDTH CLEAR ZONES BOTH SIDES
4" MIN. THICKNESS CONCRETE, TYP.
6" MIN THICKNESS AT DRIVEWAYS
2% CROSS-SLOPE MAXIMUM

C
SECTION C - MARINE DRIVE
Scale: NTS

ZENOVIC & ASSOCIATES
INCORPORATED
301 E. 6TH STREET, SUITE 1
PORT ANGELES, WA 96362
PHONE: (360) 417-0501
FAX: (360) 417-0514
EMAIL: ZENOVIC@ZENOVIC.NET

REVISIONS:	DATE	MARK	NOTE

SEGMENT 1B - PRELIMINARY LAYOUT

TITLE: COPA WATERFRONT TRAIL EXTENSION

CLIENT: CITY OF PORT ANGELES
321 E. 5TH STREET
PORT ANGELES, WA

SCALE: 1" = 40'

FILE: 16452A-E2

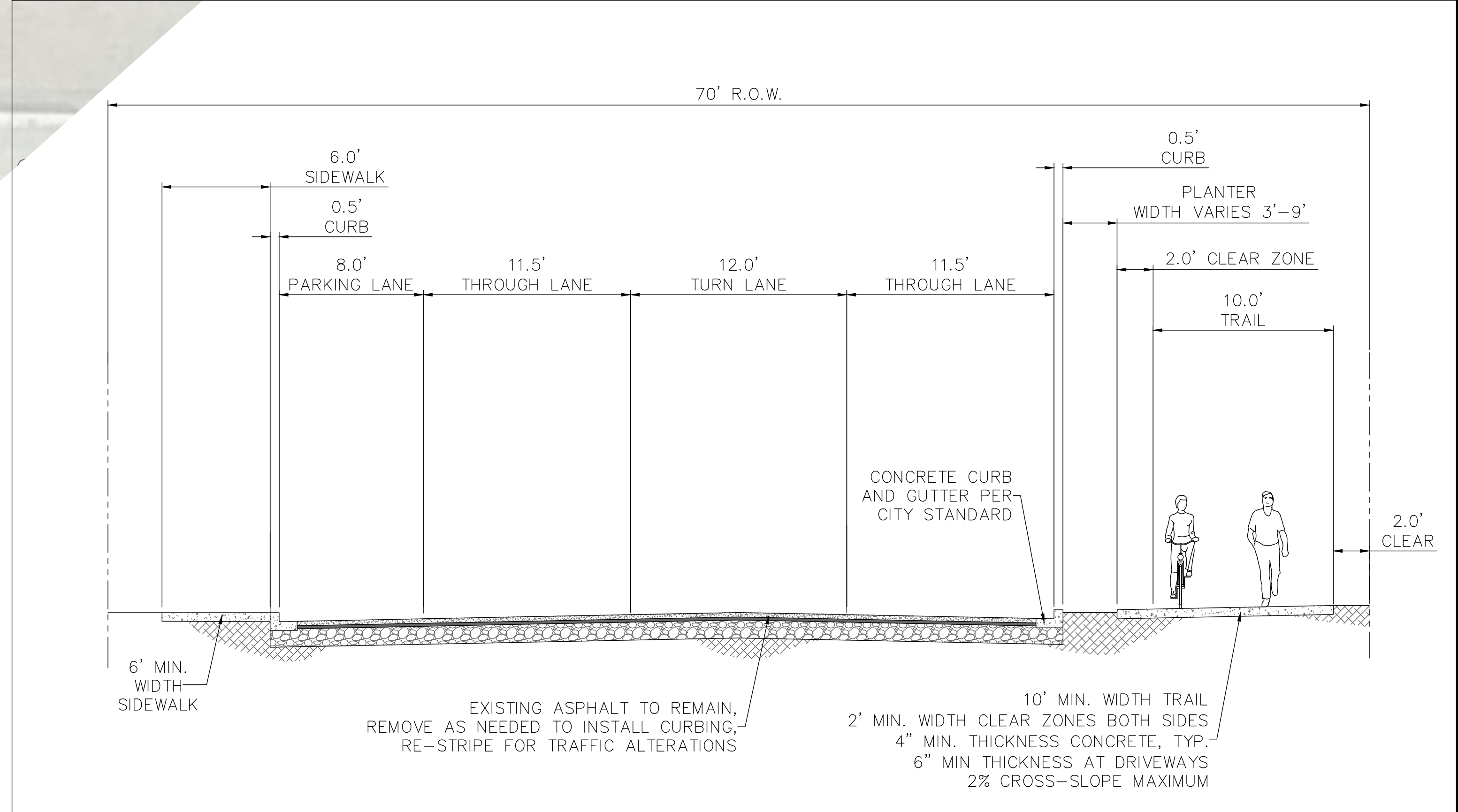
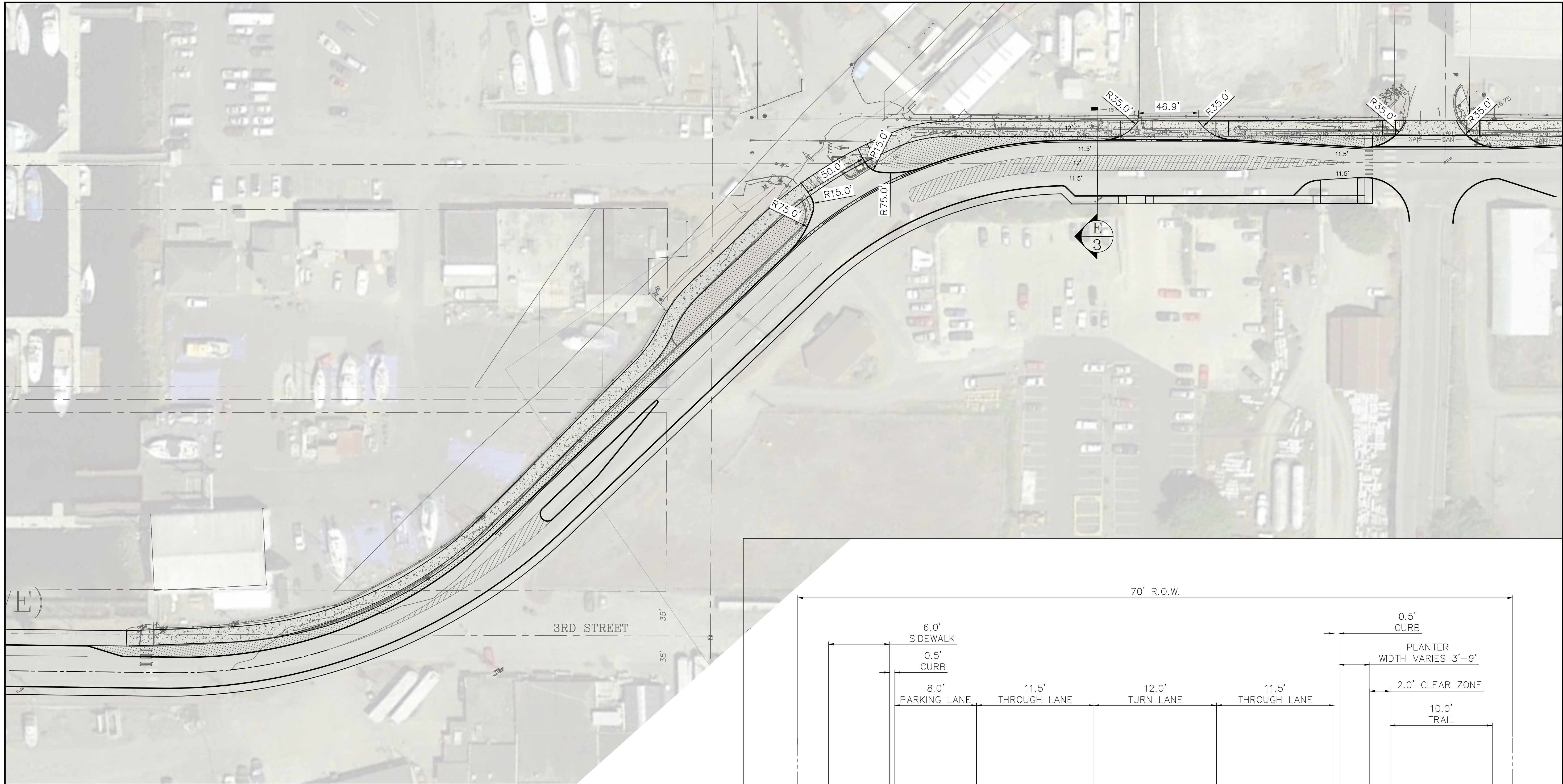
JOB NO: 16452

DATE: September 18, 2017

SET: PRELIM

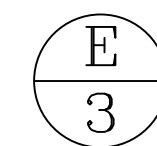
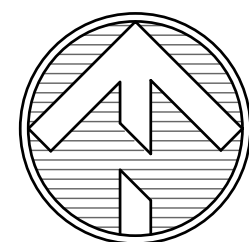
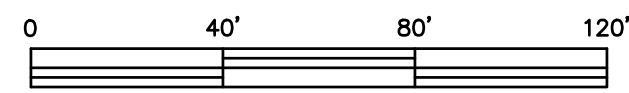
SHEET

2



SITE PLAN

Scale: 1" = 40'



SECTION E - MARINE DRIVE

Scale: NTS

ZENOVIC & ASSOCIATES
 INCORPORATED
 301 E. 6TH STREET, SUITE 1
 PORT ANGELES, WA 98162
 PHONE: (360) 417-0501
 FAX: (360) 417-0514
 EMAIL: ZENOVIC@ZENOVIC.NET

REVISIONS:	DATE	MARK	NOTE

SEGMENT 1C - PRELIMINARY LAYOUT

TITLE: COPA WATERFRONT TRAIL EXTENSION

CLIENT: CITY OF PORT ANGELES
 321 E. 5TH STREET
 PORT ANGELES, WA

SCALE: 1" = 40'

FILE: 16452A-E2

JOB NO: 16452

DATE: September 18, 2017

SET: PRELIM

SHEET