

SIGN SPACING = X (1)		
RURAL ROADS & URBAN ARTERIALS	35 / 40 MPH	350' ±
RURAL ROADS, URBAN ARTERIALS, RESIDENTIAL & BUSINESS DISTRICTS	25 / 30 MPH	200' ± (2)
URBAN STREETS	25 MPH OR LESS	100' ± (2)

(1) ALL SPACING MAY BE ADJUSTED TO ACCOMMODATE INTERSECTIONS AND DRIVEWAYS.
(2) THIS SPACING MAY BE REDUCED IN URBAN AREAS TO FIT ROADWAY CONDITIONS.

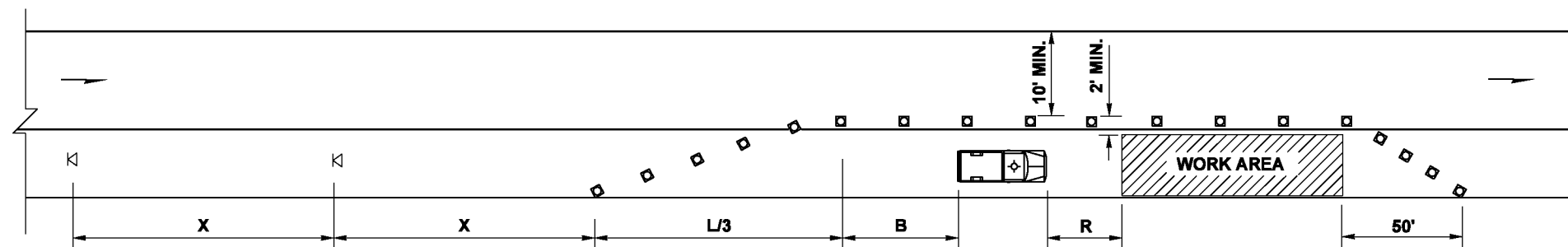
MINIMUM SHOULDER TAPER LENGTH = L/3 (feet)										
SHOULDER WIDTH (feet)	Posted Speed (mph)									
	25	30	35	40	45	50	55	60	65	70
8'	40	40	60	90	-	-	-	-	-	-
10'	40	60	90	90	-	-	-	-	-	-

USE A 3 DEVICES TAPER FOR SHOULDERS LESS THEN 8'

CHANNELIZATION DEVICE SPACING (feet)		
MPH	TAPER	TANGENT
35/40	30	60
25/30	20	40

BUFFER DATA										
LONGITUDINAL BUFFER SPACE = B										
SPEED (MPH)	25	30	35	40	45	50	55	60	65	70
LENGTH (feet)	155	200	250	305						

BUFFER VEHICLE ROLL AHEAD DISTANCE = R	
TRANSPORTABLE ATTENUATOR MINIMUM HOST VEHICLE WEIGHT 15,000 LBS. THE MAXIMUM WEIGHT SHALL BE IN ACCORDANCE WITH THE MANUFACTURERS RECOMMENDATION.	30 FEET MIN. TO 100 FEET MAX.
PROTECTIVE VEHICLE MAY BE A WORK VEHICLE STRATEGICALLY LOCATED TO SHIELD THE WORK AREA.	NO SPECIFIED DISTANCE REQUIRED



LEGEND

- ⊠ TEMPORARY SIGN LOCATION
- CHANNELIZING DEVICES
- PROTECTIVE VEHICLE

**SHOULDER CLOSURE - LOW SPEED
(40 MPH OR LESS)**

NOT TO SCALE

NOTES:

1. DEVICE SPACING FOR THE DOWNSTREAM TAPER SHALL BE 20'.
2. ALL SIGNS ARE BLACK ON ORANGE.
3. NO FLAGGERS OR SPOTTERS.

FILE NAME	S:\Design R P & S4-Standard\2-Plan Sheet Library\10-Work Zone Traffic Control (TC)\TC-5\TC-5.dgn					REGION NO.	STATE	FED.AID PROJ.NO.	Washington State Department of Transportation	TC5
TIME	10:58:46 AM					10	WASH			
DATE	5/17/2013					JOB NUMBER			TRAFFIC CONTROL PLAN	SHEET OF SHEETS
PLOTTED BY	CyfordL					CONTRACT NO.	LOCATION NO.			
DESIGNED BY										
ENTERED BY										
CHECKED BY										
PROJ. ENGR.										
REGIONAL ADM.	REVISION	DATE	BY							